

**BSE**  
INSTITUTE LIMITED

**GFMP**  
GLOBAL FINANCIAL MARKETS PROFESSIONAL

# GLOBAL FINANCIAL MARKETS PROFESSIONAL PROGRAM





# INTRODUCTION

The BSE Institute Ltd. is a wholly owned subsidiary of BSE Ltd. BSE has the largest number of listed companies and ranks number four in the world in terms of annual transactions. BSE Institute inherits from BSE the knowledge and insights into the capital markets industry, garnered over the past 140 years.

BSE Institute has the distinct advantage of being at the centre of action - the financial hub of India, one of the world's most rapid emerging markets. This has helped us provide insights into the unique functions of this world. The first hand experience of our faculty and subject matter experts in dealing with the realities of the market enables us to appreciate how organizations, entrepreneurs, and investors identify and respond to new challenges and opportunities.

## PROGRAM MODULES

### GLOBAL FINANCIAL MARKET ASSOCIATES - GFMA



- Introduction to Financial markets
- Banking Operations I
- Marketing & Sales (Basics)
- Soft Skills
- Economics
- Financial Accounting & Financial Reporting & Analysis
- Mutual Fund
- Technical Analysis

**SEMESTER I**

### GLOBAL FINANCIAL MARKET SPECIALIST - GFMS



- Quantitative & statistical concepts
- Ethical and professional standard
- Technical Analysis II
- Securities Law
- Derivatives
- Advance Excel
- Corporate Finance
- Banking Operations II

**SEMESTER II**

### GLOBAL FINANCIAL MARKET EXPERT - GFME



- Financial Risk Management
- Fixed Income Securities
- Mergers and Acquisition
- Investment Banking
- Banking Operations III
- Commodities Market
- Financial Modelling

**SEMESTER III**

### GLOBAL FINANCIAL MARKET PROFESSIONAL - GFMP



- Portfolio Management
- Taxation
- Financial Planning
- Project finance
- Financial Software
- Preparation for regulatory exam
- Foreign Exchange Market
- Leadership Development Program

**SEMESTER IV**



# GLOBAL FINANCIAL MARKETS PROFESSIONAL

Global Financial Markets Professional (GFMP) Program is a comprehensive course on Bank & Financial Services markets that will prepare you for aggressive competition and fast paced decision making. Only the best prepared, professionally qualified students, who are equipped to handle the pressure and skilled to operate in a cool and calculated manner under demanding circumstances, are the ones who will make a difference and carve a niche for themselves in this industry.

Our programs develop the students in the following three areas:

Our course design and development is firmly grounded in knowledge of business processes; both in entrepreneurial companies and established firms unconstrained by the boundaries of academic disciplines.

## Program Details

The 4 semesters of classroom sessions of GFMP program will be followed by 1 semester of Industry Practice, a form of internship at leading organizations from the industry. This added advantage of Industry Practice makes it an even more viable option for anyone who wishes to build his/her career in this industry.

## Program Duration

- 4 semesters - Classroom sessions
- 1 semester - Industry practice
- Preparing Sessions for Regular Exams

## Program Mode

This program comprises of

- Interactive lectures
- Case study discussions
- Hands on sessions
- Interactive simulation labs
- Working on near real-time data
- 6 months of Industry Practice
- Preparing Sessions for Regular Exams

## Faculty

Our faculty follows a long tradition of practice oriented research and teaching that has a profound and far-reaching impact on business and management education.



## Eligibility

- 12<sup>th</sup> standard & above
- Graduate students can apply for a fast-track format

## Certification

- There will be Certificate examination at the end of each semester
- Industry Practice will be evaluated through mentor feedback and periodic review from the Institute
- Covers key areas of regulatory exam like Cash, Derivatives, Mutual Funds, Banking Co-ordinates.

“Education is not preparation for life; education is life itself.”  
- John Dewey

# CAREER PROGRESSION



**GFMA**

- Professional Trader
- Customer Service Management
- Banking Specialist
- Banking Center Supervisor
- Teller
- Investment Banking Associate
- Database Analyst

**GFMS**

- Investment Analyst
- Research Analyst
- Investment Banker
- Management – Retail Banking
- Associate – Advisory
- Credit Management & Specialist
- Accounting Management
- Database Analyst
- Support Analyst

**GFME**

- Investment Analyst
- Risk Management
- Investment Advisor
- Financial Advisor
- Loan Officer
- Wealth Management
- Audit Consultant
- Technical Analyst

**GFMP**

- Investment Analyst
- Portfolio Management
- Investment Banker
- Business Analyst
- Risk Management – Financial Services
- Data Governance Management
- Credit Risk Management
- Finance Management

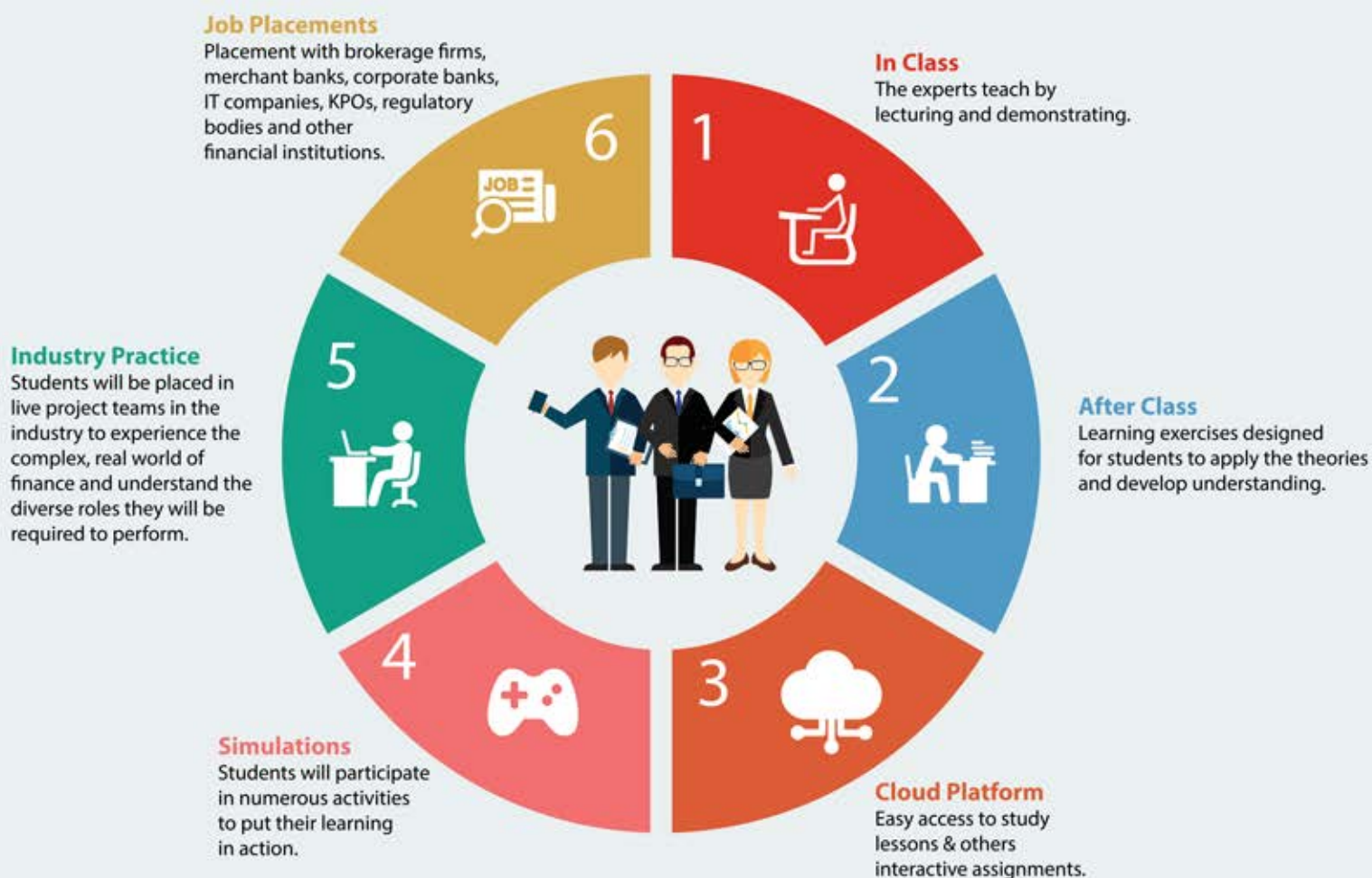


# PROGRAM METHODOLOGY

The GFMP certification program has been designed to give students a 360° learning experience. The students will have regular classroom sessions with lectures by Industry practitioners. Outside the class the learning will continue through workbook filled with application based exercises and assignments as do - it – yourself projects for students after class. Simulation activities such as live trading, application of technical analysis charts, simulation based portfolio management, stock market games will be an integral part of the learning process where students learn by doing in a controlled environment.

We have also introduced a unique cloud platform for convenient access to study material, presentations, faculty interactions, and much more anywhere, anytime.

Industry practice is an integral part of the program. The aim is to immerse students in the work environment so that when they graduate they are truly job ready. At the end of the program, students will be assisted with placements by BSE Institute's Placement Cell.



## PLACEMENTS

Many reputed organizations from the banking, financial services, insurance, capital market, market intermediaries, mutual funds, asset management, investment banking, non-banking financial sector and even reputed brokerage houses employ quality students who have successfully completed training from BSE Institute Ltd.

Our placement cell is an integral part of the Institute. It maintains a very cordial relationship with all the recruiting industries and also prepares the recruited candidates to face the competitive world.





## WHY CHOOSE GFMP ?

The Indian financial sector is booming with an upturn in the economy and increase in demand for the Indian financial services. Whereas the growth in the Indian Banking Industry is expected to rise in the coming years and proportionally employment opportunities will also increase.

The GFMP program has been designed to enhance student skills to not only meet this manpower requirement, but also to cope with any new innovations that will take place in the industry and be a part of it.



### GLOBAL FINANCIAL MARKETS ANALYST

The GFMA knows how the Banking and Financial Service Industry (BFSI) works. As a GFMA you can do the math, analyse trends and operate latest financial software.

### GLOBAL FINANCIAL MARKETS SPECIALIST

The GFMS can analyse the industry to take decisions. As a GFMS you will master the different markets and their operations.



### GLOBAL FINANCIAL MARKETS EXPERT

The GFME understands risk and knows the right strategies to avoid it. As a GFME, you might hedge risks for a living – derivatives are the game you'll play.

### GLOBAL FINANCIAL MARKETS PROFESSIONAL

The GFMP blend strategies for successful portfolio management. As a GFMP you will be sought by venture capitalists to pick the winning deals.







## HOW TO APPLY ?

Download the application form from the website – <http://gfmp.bsebti.com>. Kindly fill in the application form and mail it at the below mentioned address.

**Address:** BSE Institute Limited, 18th & 19th Floor, P. J. Towers, Dalal Street, Mumbai – 400 001.

**E-mail:** [admissions@bseindia.com](mailto:admissions@bseindia.com)

**Call:** 1800 22 9030 (10:00 a.m. to 6:00 p.m. - Monday to Friday) | Follow us on:    

## Contact: